

SHARP®

Touch Display Link

Version 1.0

PN-SL01

Operation Manual

Contents

Introduction	3	Operating files	19
Operating Environment	4	Viewing Operation Guide	22
Installing the software	5	Configuring host settings	23
Computer	5	Exiting the application	25
Android device	5	Computer	25
iOS device.....	5	Android device	25
Starting the application	6	iOS device.....	25
Computer	6	Uninstalling the software	26
Tablet device	6	Computer	26
Screen guide	8	Android device	26
Main screen on Computer (Host menu).....	8	iOS device.....	26
Main screen on tablet device	9	Trademarks	27
Operating a monitor from a tablet device	10		
Sending files from the Computer to a tablet device	13		
Computer operation	13		
Tablet device operation	13		
Sending files from a tablet device to the Computer	14		
Tablet device operation	14		
Computer operation	14		
Selecting files to send from a tablet device.....	15		
Sending selected files	17		
Sharing screen display	18		

Introduction

Touch Display Link is software that allows a computer connected to a SHARP monitor to communicate with tablet devices via Wi-Fi. It also lets users send and receive files, share screens, and operate the monitor screen from a tablet device.

- The computer can be operated by dragging or performing actions on a tablet device.
- Files can be sent and received between tablet devices and a computer.
- If using SHARP Pen Software, Pen Software screens displayed on the monitor can be viewed on a tablet device.
Handwritten notes written using Pen Software can also be sent to a tablet device.

■ Important Information

- This software has been shipped after strict quality control and product inspection. If, however, you find any failure or malfunction, contact your product dealer.
- Please understand that SHARP CORPORATION bears no responsibility for errors made during use by the customer or a third party, nor for any other malfunctions or damage to this software arising during use, except where indemnity liability is recognized under law.
- Transcribing or duplicating part or all of this manual and/or this software without permission from our company is not permitted.
- As a part of our policy of continuous improvement, SHARP reserves the right to make design and specification changes for product improvement without prior notice.
- File names and numbers of characters that can be handled by this software comply with the specifications of Windows, Android, and iOS.

■ Notation Conventions

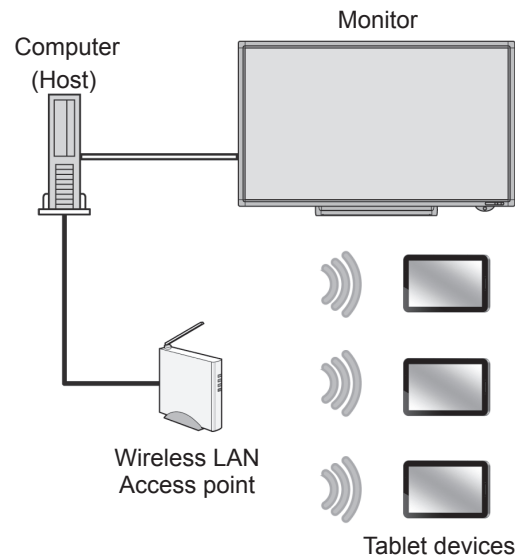
- Key press actions are indicated with square brackets.
E.g. [Home] key, [Back] key, etc.
- Menus, windows, dialog boxes, buttons, and tabs etc are indicated with square brackets.
E.g. **1. Tap the [Show host menu tag] on the desktop.**
The Host menu appears.
- Items, check boxes, and option buttons, etc., are indicated with quotation marks.
E.g. "Shake to Send File", "Verify by connection ID", etc.
- This manual assumes that Touch Display Link has been installed in the following location. If you have installed Touch Display Link in a different location, this can be interpreted to refer to the folder where you installed it.
C:\Program Files\SHARP\Touch Display Link (default)
- The screenshots and operational procedures in this manual are only examples. These may change depending on your monitor, screen settings, or the version of the OS you are using and other factors. This manual gives instructions using Windows 7 as an example.
- This manual does not contain basic operating instructions for Windows, Android, and iOS.
- In this manual, the terms "microSD memory card" and "microSDHC memory card" are shortened to "SD card".
- Compatible Android devices and iOS devices are collectively referred to as "tablet devices".
- A computer with this software installed that is connected to a compatible monitor is referred to as a "host".

Operating Environment

A monitor, computer connected to a monitor, and tablet device are required.

A wireless LAN environment is required to connect tablet devices to the network.

Example System Configuration



■ Monitor

SHARP monitors (as of November 2012)
PN-L601B / PN-L602B / PN-L702B / PN-L802B

■ Computer

The computer must fulfill the requirements below.

CPU	Intel Celeron or AMD Sempron 1.6 GHz or faster Intel Core 2 Duo or AMD Athlon II X2 2.8 GHz or faster recommended
OS	Windows XP (32-bit or 64-bit version), Windows Vista (32-bit or 64-bit version), Windows 7 (32-bit or 64-bit version)
Memory	At least 2 GB
Free space on hard drive	At least 100 MB

Pen Software version 2.5.2.5 or later must be installed in order to use Pen Software functions.

■ Tablet devices

Android devices (as of November 2012)

- Asus Eee Pad Transformer TF101
- Samsung Galaxy Tab 10.1 GT-P7510
- Motorola Xoom MZ604, Xoom2 MZ615

(Android 2.3.3 or later with English language support)

* Insert an SD card.

The software may not function properly if an SD card is not inserted.

iOS devices (as of November 2012)

Apple iPad, iPad 2, and iPad (third generation) (iOS 5.0 or later with English language support)

■ Wireless LAN environment (Wi-Fi)

Requires a local network with wireless LAN connection capabilities.

Ensure that the tablet device is ready to connect to the local network.

For connection settings, refer to the manual for the tablet device or access point.

TIPS

- A maximum of 20 tablet devices may be connected to a single host at the same time. The number of devices that can be connected may be lower depending on network environment and other factors.
- If this application goes into standby mode because a tablet device is locked, the Home button is pressed, another application is started, or a similar event occurs while this application is running, the following happens:

Android device

The current process is canceled.

File transmission and reception is processed in the background. To start using the software again, reconnect to the host.

iOS device

The current process is canceled.

File transmission and reception continues but is interrupted once the time that iOS can process background tasks (maximum 10 minutes) has elapsed.

To start using the software again, reconnect to the host.

Installing the software

Computer

Ensure you are logged in with administrator privileges.

The license code is required for installation.

1. **Exit all application software.**
2. **Launch the setup program (Setup.exe).**
3. **Follow the instructions on the screen.**
 - If a “User Account Control” window appears, tap [Yes] (or [Allow]).
 - If a security warning saying (“The publisher could not be verified.”) is displayed, tap [Run].
 - If you do not want the application to start automatically when the computer starts up, clear the “Automatically start Touch Display Link” check box.

Android device

Download and install the application from Google Play.

TIPS

Refer to the instructions that came with your Android device.

1. **Tap [Google Play] or [Play Store].**

When the Details screen is displayed, check the app's functions, developer, and other detailed information.
2. **Tap the search field, type “Touch Display Link”, and tap [Search].**
3. **Tap the [Touch Display Link] that appears in the search results.**
4. **Tap [Install].**
5. **If you agree to the security permissions that the app requires, tap [Accept & download].**

The download will start.

iOS device

Download and install the application from the App Store.

TIPS

- Refer to the instructions that came with your iOS device.
1. **Tap [App Store].**
 2. **Tap the search field, type “Touch Display Link”, and tap [Search].**
 3. **Tap the [Touch Display Link] that appears in the search results.**
 4. **Tap the [FREE] icon.**
 5. **Tap the [INSTALL APP] icon.**

The installation will start.


Starting the application

Computer

The application will normally start automatically when the computer starts up.

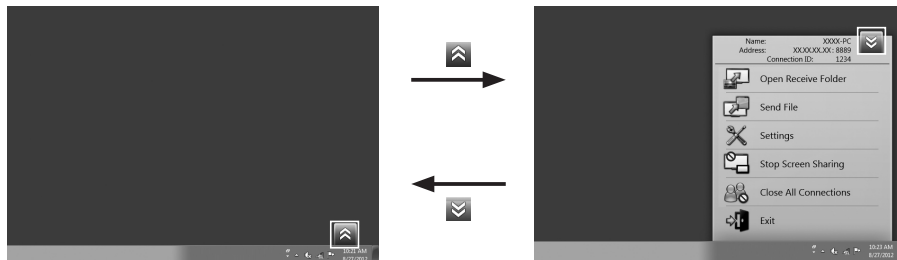
TIPS

To start the application manually, follow the procedure below.

- Double-tap the “Touch Display Link shortcut” () on the desktop.
- From the [Start] button on the Windows taskbar, tap [All Programs] and then tap [SHARP Touch Display Link] and [Touch Display Link].

1. Tap the [Show host menu tag] on the desktop.

The Host menu appears.



The Host menu screen is used for host operation. (page 8)

TIPS

- When the application is started for the first time, if a message saying “Windows Firewall has blocked some features of this program” appears, select “Allow access”.
- The [Show host menu tag] can be moved by dragging.

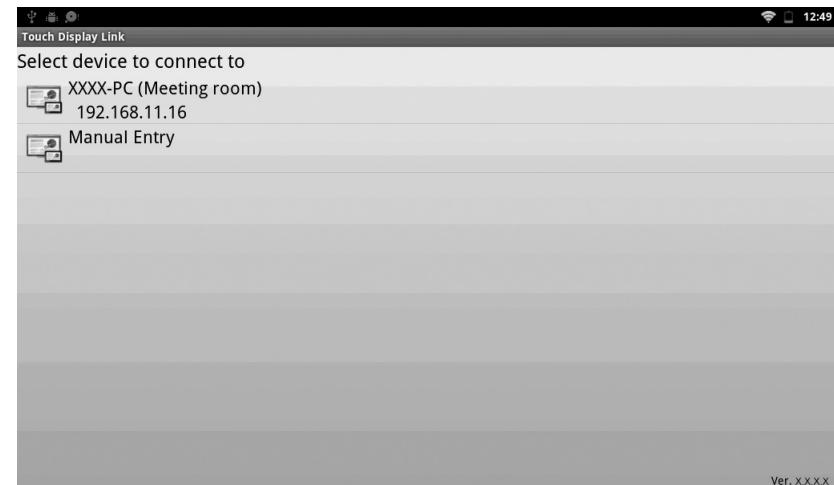
Tablet device

TIPS

- Refer to the manuals that came with your tablet device.

1. Tap “TDLink”.

Touch Display Link starts and a list of hosts connected to the same network is displayed.

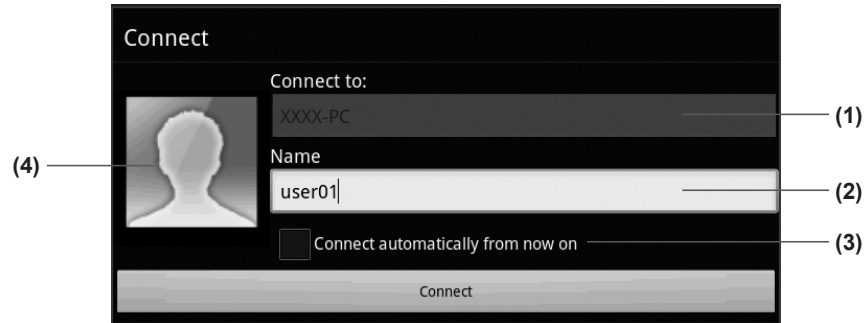


2. Tap a host that you want to connect to.

To manually enter the IP address of a host, tap [Manual Entry].

A login information screen appears.

3. Enter login information.



(1) Connect to

Do not enter this information if you selected a host in step 2.
If you selected [Manual Entry] in step 2, enter the IP address of the host that you want to connect to.

(2) Name

Enter a user name. (Maximum length: 12 half-width characters/6 full-width characters)
The name you enter will be displayed on the host (monitor).

(3) Connect automatically from now on

Select the check box to automatically connect to the same device next time the application starts.
Selecting the check box allows you to automatically connect simply by tapping [TDLink].

(4) Icon

Set an image that will be displayed on the host (monitor) when logging in.
To change the image, tap the icon and select a different image.

4. When you have completed the settings, tap [Connect].

The main screen on the tablet device is displayed. (page 9)

TIPS

- When authentication via conference connection ID is set, a conference connection ID entry screen appears. Enter the conference connection ID set under "Verify by connection ID" on the host. (page 23)
- To disable automatic connection, perform the procedure after the device has automatically connected.

(1) Tap [Open menu] and then [Exit Conference].

(2) Tap [Yes] and disconnect temporarily.

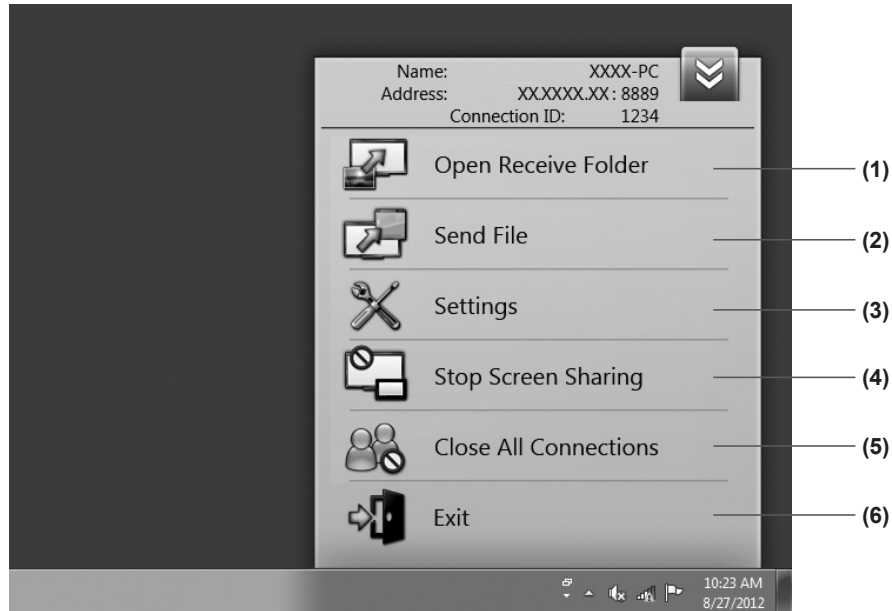
(3) Tap [Open menu] and then [Join Conference] and select the device for which you want to disable automatic connection.

(4) Clear the "Connect automatically from now on" check box.

(5) Tap [Connect] to reconnect.

Screen guide

Main screen on Computer (Host menu)



(1) Open Receive Folder

Opens the folder where files downloaded from the tablet device are stored.

(2) Send File

Sends files to a tablet device. (page 13)

(3) Settings

Configures host operation settings. (page 23)

(4) Start (Stop) Screen Sharing

Can be used to share the screen of a monitor connected to the host and display it on tablet devices. (page 18)



Displays [Stop Screen Sharing] if the screen is displayed. Tap [Stop Screen Sharing] if you do not want to display the screen on tablet devices.

(5) Close All Connections

Forcibly ends the connection with all connected tablet devices.

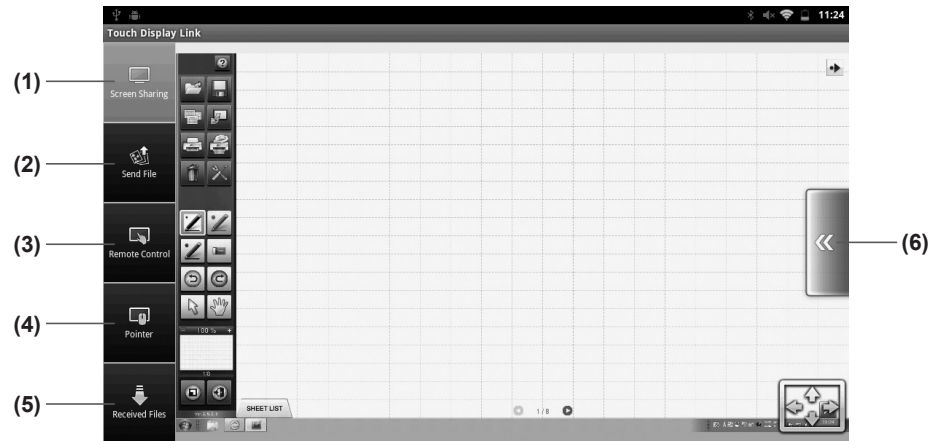
(6) Exit

Exits the host application.

Tapping the [Hide host menu tag]  on the upper right of the Host menu closes the Host menu. Tapping the [Show host menu tag]  again opens the Host menu.

Main screen on tablet device

Android device



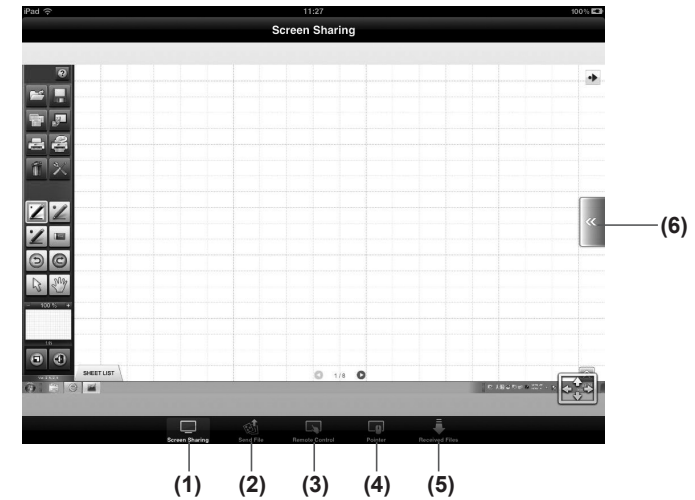
- (1) **Screen Sharing**
Displays the host screen on tablet devices. (page 18)
- (2) **Send File**
Sends files from a tablet device to the host. (page 14)
- (3) **Remote operation (Pen Software operation mode)**
Used to operate Pen Software on the host from a tablet device. (page 10)
- (4) **Remote operation (Pointer mode)**
Used to operate the host's pointer from a tablet device. (page 11)
- (5) **Received Files**
Used to operate files sent from the host to a tablet device. (page 19)
- (6) **Open/close menu**
Displays the menu for each function.

The first time the application is used, an operation guide will appear when a function button is tapped.

Tapping the screen closes the operation guide.

To see operation guides again tap [Open menu] and then [Operation Guide].

iOS device



Operating a monitor from a tablet device

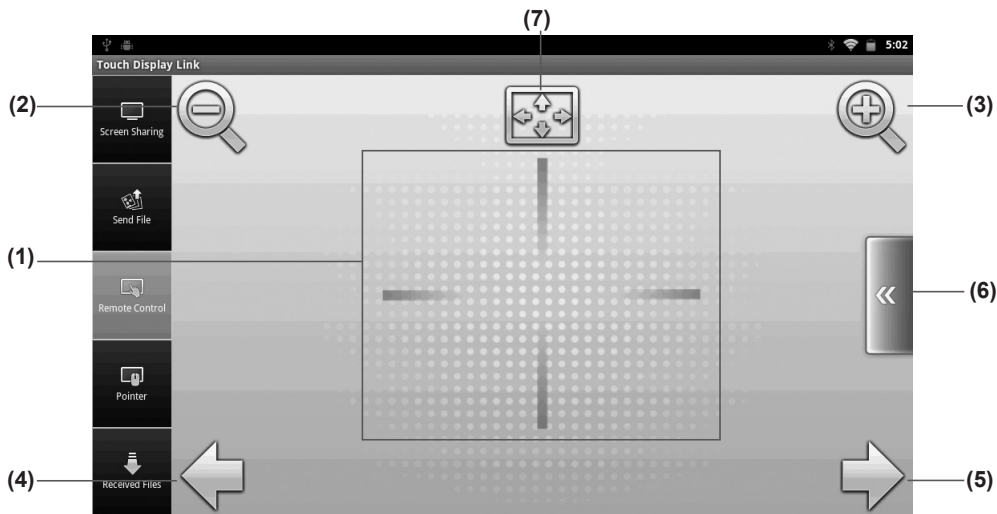
You can operate the host from a tablet device.

■ Remote operation (Pen Software operation mode)

You can operate Pen Software on the host from a tablet device.

1. On the main screen on the tablet device, tap [Remote Control].

The Pen Software operation mode screen appears.



- (1) **Remote operation area**
When the sheet is enlarged, this area can be dragged to scroll the image.
- (2) **Reduce screen**
Reduces the current sheet.
- (3) **Enlarge screen**
Enlarges the current sheet.
- (4) **Display previous sheet**
Displays the previous sheet.
Cannot be tapped when the first sheet is displayed.
- (5) **Display next sheet**
Displays the next sheet.
Cannot be tapped when the last sheet is displayed.
- (6) **Open/close menu**
Shows/hides the remote operation function screen menu. (page 12)
- (7) **Display at full size**
Returns the zoom ratio of the current sheet to 100%.

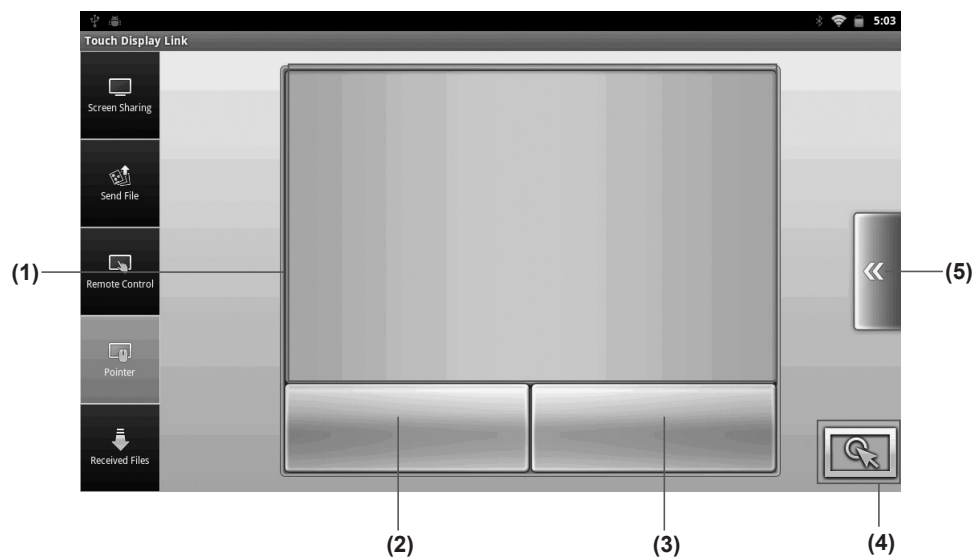
TIPS

- When “Allow remote control from one computer” is selected in “Pen Software Remote Settings” on the host (page 23), Pen Software cannot be operated if another tablet device is using the remote operation function.
On the menu, tap “Get Pen Software Control”. (page 12)
- When “Do not allow remote control” is selected in “Pen Software Remote Settings” on the host (page 23), the remote operation function cannot be used.

■ Remote operation (Pointer mode)

1. On the main screen on the tablet device, tap [Pointer].

The software switches to pointer mode and the pointer displayed on the monitor can be operated from the tablet device.



(1) Remote operation area

Drag this area to move the display position of the pointer on the monitor.

(2) Left click

Executes a left mouse click at the position where the pointer is displayed on the host (monitor).

(3) Right click

Executes a right mouse click at the position where the pointer is displayed on the host (monitor).

(4) Highlight pointer

Highlights the position of the pointer on the host (monitor).

(5) Open/close menu

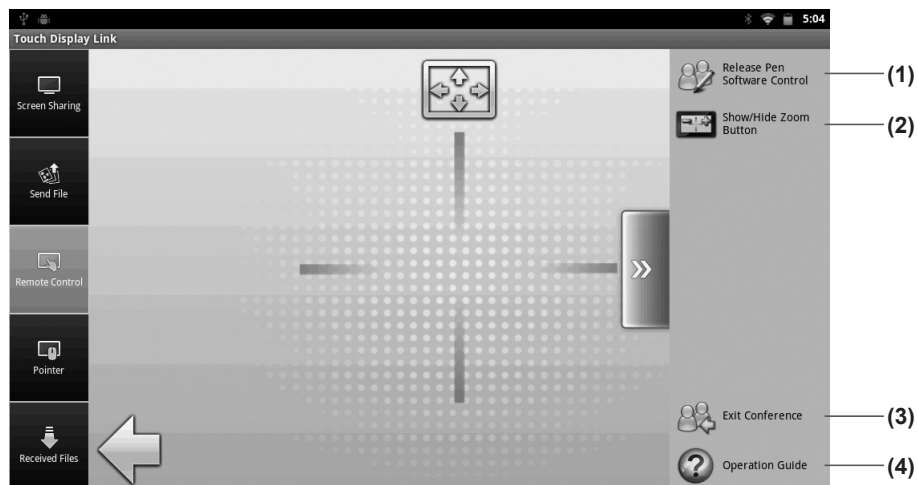
Shows/hides the remote operation screen menu. (page 12)

TIPS

Your pointer color is determined as the same one on the figure icon when you connect to a conference. This makes it easier for you to identify which pointer belongs to whom when there are some other participants.

■ Menu operation in remote operation mode

To show the menu, tap the remote operation [Open menu] button.



- (1) Get/Release Pen Software Control (Pen Software operation mode only)**
Obtains the host's remote operation permissions.
If operation permissions have already been obtained, [Release Pen Software Control] is displayed.
Tap to cancel operation permissions.
Used when "Allow remote control from one computer" is selected in "Pen Software Remote Settings" on the host (page 23).
- (2) Show/Hide Zoom Button (Pen Software operation mode only)**
Shows/hides the [Enlarge screen] and [Reduce screen] buttons.
- (3) Join Conference/Exit Conference**
To end the connection with the host without exiting the application, tap [Exit Conference].
To reconnect, tap [Join Conference] again and select a host to connect to. (page 6)
- (4) Operation Guide**
Displays operation guides. (page 22)

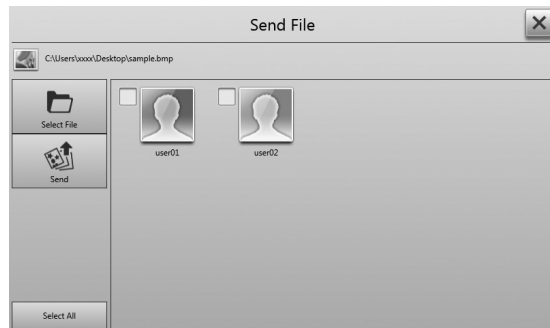
Sending files from the Computer to a tablet device

You can send files from the host to a tablet device. (Recommended file size: 30MB or less)
It is possible to send images, documents, and other data files.

Computer operation

You can send files from the host to a tablet device.

1. In the Host menu, tap [Send File].
2. Tap [Select File], select files to transfer, and tap [Open].
Or select files to transfer using a drag-and-drop operation.



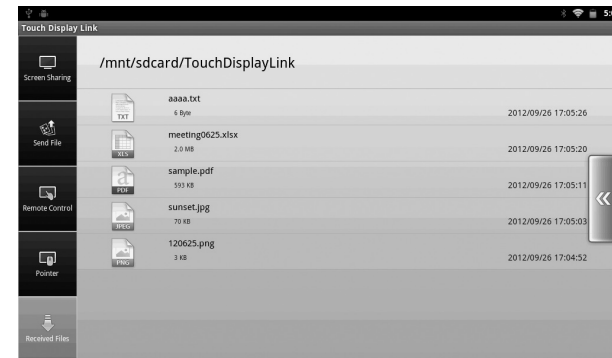
3. Select a destination user.
Tapping [Select All] selects all destination users. To cancel, tap [Cancel All].
4. Tap [Send].
The selected files are sent to the tablet device.

Tablet device operation

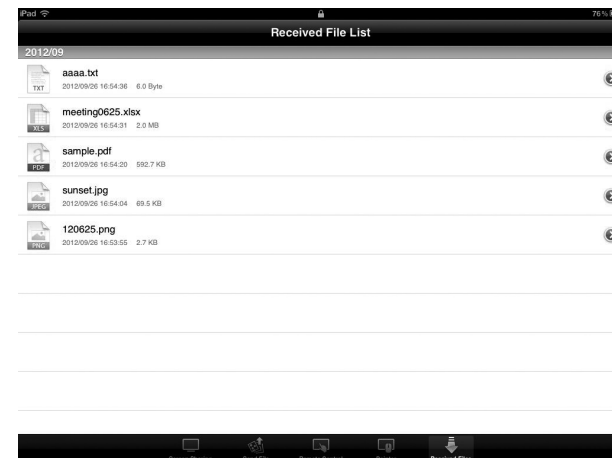
1. Tap [Received Files].

A list of files received from the host appears.
Select files.

Android device



iOS device



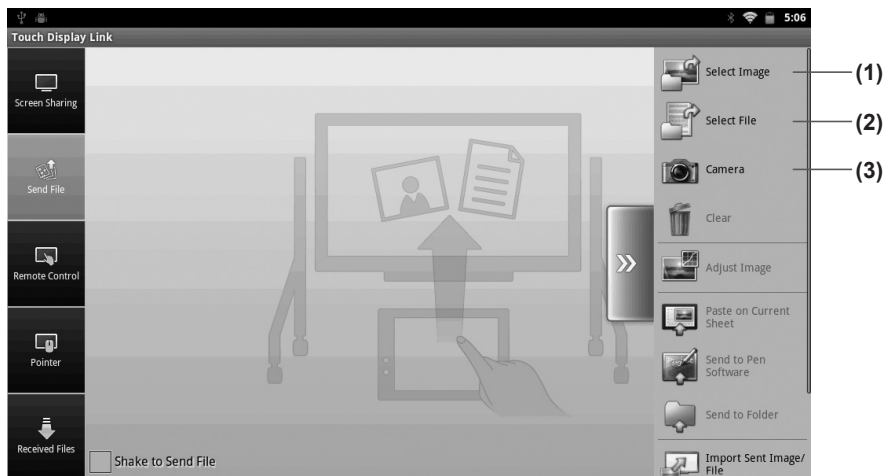
Sending files from a tablet device to the Computer

You can send files from a tablet device to the host. (Recommended file size: 30MB or less)
It is possible to send images, documents, and other data files.

Tablet device operation

1. On the main screen on the tablet device, tap [Send File].
2. Tap [Open menu] on the right of the screen.

A menu appears.



3. Select the files you want to send.

- (1) Select Image
Selects images saved on tablet device.
→ Selecting images (page 15)
- (2) Select File
Selects files saved on tablet device.
→ Selecting files (page 16)
- (3) Camera
Starts the camera and selects captured data as images.
→ Camera (page 15)

When a file is selected, the selected file is displayed.
To cancel selected files, tap [Clear].

4. Select a transfer method and send the files. (page 17)

TIPS


- While a tablet device is sending files to the host, other tablet devices cannot send files to the same host.

Computer operation

Files sent using “Paste on Current Sheet”

- Images received from a tablet device are pasted to the Pen Software whiteboard.

Files sent using “Send to Pen Software”

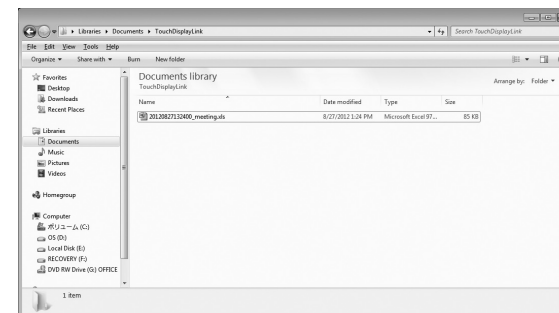
- When data is received from a tablet device, “Import images” () in Pen Software (whiteboard mode) flashes.
- Tapping “Import images” imports the data.

TIPS

- Refer to “Importing a Document as an Image (Pen Software Printer Driver)” in the Pen Software Operation Manual.
- You can also import data by tapping “Import Sent Image/File” in the tablet device menu.

Files sent using “Send to Folder”

- Tapping [Open Receive Folder] in the Host menu opens the folder where files received from tablet devices are stored.



Selecting files to send from a tablet device

■ Selecting images


You can send image files to the host.

1. **From the Send File screen, tap [Open menu] and then tap [Select Image].**
2. **Select images.**

If using an Android device, select images from “Gallery”.

If using an iOS device, select images from “Photos”.

Image previews are displayed for JPEG and PNG files. For other image files,

an icon  is displayed. (page 17)

TIPS

- For details on selecting images, refer to the tablet device manual.

■ Camera

You can send image data captured with the camera to the host.

1. **From the Send File screen, tap [Open menu] and then [Camera].**

Camera is started.

Captured images are displayed in the preview area. (page 17)

TIPS

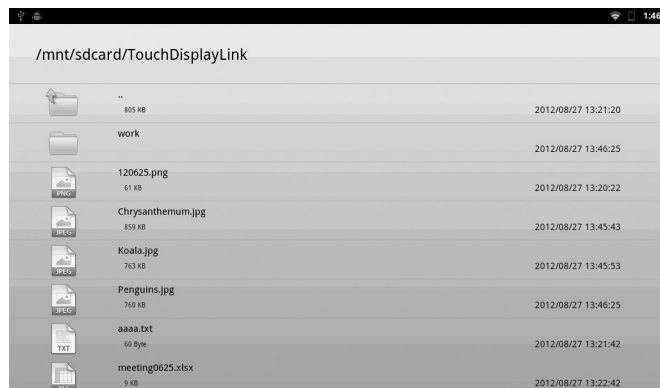
- For details on camera operation, refer to the tablet device manual.

■ Selecting files

You can send files saved on a tablet device to the host.


1. From the Send File screen, tap [Open menu] and then [Select File].

A list of files appears.




2. Select files.

- Tapping a folder () displays a list of the files in the folder in question.

Tapping  displays a list of files in the folder above the current folder.

(Above functions only available on Android devices.)

- When an image file (JPEG or PNG) is selected, an image preview is displayed. (page 17)
- When an image file (except for a JPEG or PNG) or non-image file is selected, a file icon is displayed in the preview display area. (page 17)
- If the file extension is not recognized by the tablet device, the default icon () is displayed. (page 17)

Sending selected files

When files to be sent are selected, a preview screen is displayed.



1. Tap [Open menu].

2. Select a transfer method and send the files.

- (1) Paste on Current Sheet
The selected images are pasted to the current sheet of the whiteboard in Pen Software.
- (2) Send to Pen Software
Imports selected files as images just like those printed on a printer to the whiteboard in Pen Software.
- (3) Send to Folder
Sends and saves selected files to a specified host folder.

* The method by which a file can be sent differs according to file type.

Paste on Current Sheet	JPEG (.jpe, .jpeg, .jpg), PNG (.png)
Send to Pen Software	JPEG (.jpe, .jpeg, .jpg), PNG (.png), TIFF (.tif, .tiff), PDF (.pdf) ^{*1} , Excel (.xls, .xlsx) ^{*2} , Word (.doc, .docx) ^{*2} , PowerPoint (.ppt, .pptx) ^{*2}
Send to Folder	All types (It is not possible to send certain file types.)

*1: Requires that Adobe Reader is installed on the host.

*2: Requires that Microsoft Office is installed on the host.

Password-Protected Files and macro-enabled files will not work correctly.

TIPS

- When the image displayed on the preview screen is flicked up, it can be sent using “Paste on Current Sheet”.
- When the shake to send checkbox is selected, hold your tablet with both hands and gently tilt back and forth several times in a fanning motion to send files.
*Take care not to drop the tablet device.
- Files cannot be sent if the “Accept file” check box on the host is not selected.
- Pen Software may operate slowly if high-resolution images are used.
- When sending PDF files to Pen Software, ensure that the Adobe Reader license agreement and dialog is not displayed. If they are displayed, the application will not function correctly.

! CAUTION

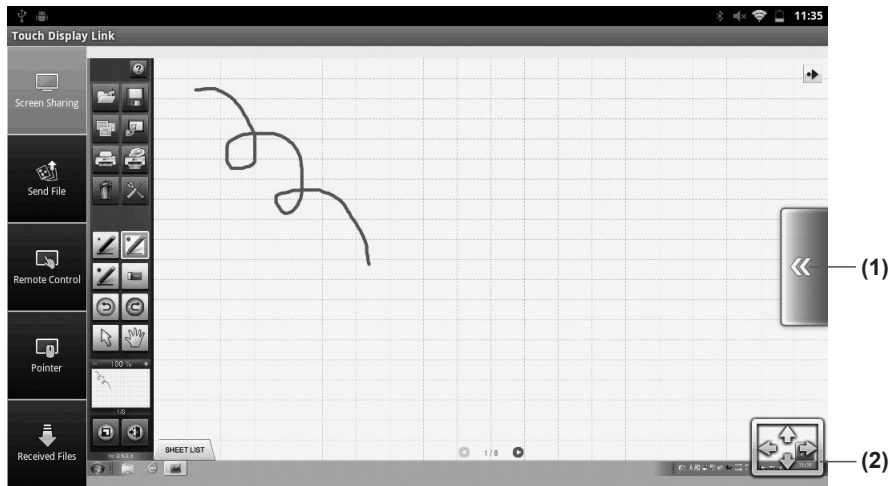
- Do not change the name of “Send print data to SHARP Pen Software” in “Devices and Printers”. If the name is changed, the application will not function correctly.

Sharing screen display

When joining conference and screen sharing is allowed on the host, you can display the host screen on tablet device screens.

1. On the main screen on the tablet device, tap [Screen Sharing].

The monitor screen is displayed on tablet devices.



You can zoom in or out by pinching in or out.

You can scroll by dragging.

(1) Open/Close menu

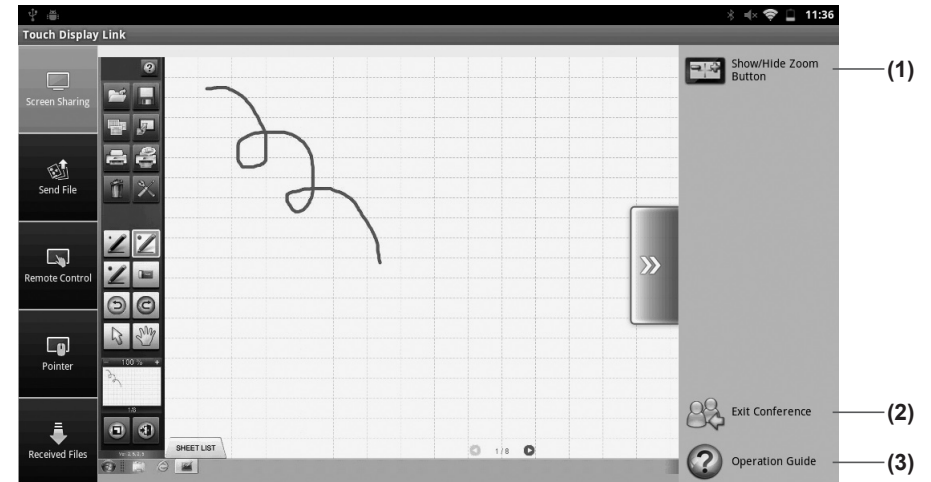
Shows/hides the Screen Sharing screen menu.

(2) Fit to Screen

Returns the screen from an enlarged or reduced state to its normal size.

The entire screen is displayed maintaining its aspect ratio.

Tapping [Open menu] on the Screen Sharing screen enables operations like those below.



(1) Show/Hide Zoom Button

Shows/hides the [Enlarge screen] and [Reduce screen] buttons.

(2) Join Conference/Exit Conference

To end the connection with the host without exiting the application, tap [Exit Conference].

To reconnect, tap [Join Conference] again and select a host to connect to. (page 6)

(3) Operation Guide

Displays operation guides. (page 22)

TIPS

- If “Stop Screen Sharing” is selected in the Host menu on the host, screen display is not synchronized.

Operating files

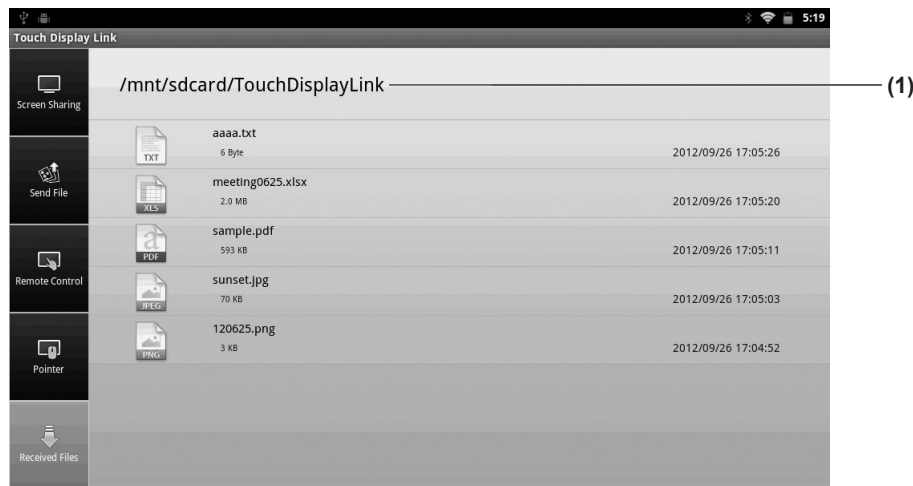
You can operate files received from the host.

On Android devices you operate files in the Downloads folder on the SD card.

On iOS devices you operate files saved on the device's own memory.

1. On the main screen on the tablet device, tap [Received Files].

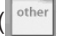
A list of files received from the host appears.



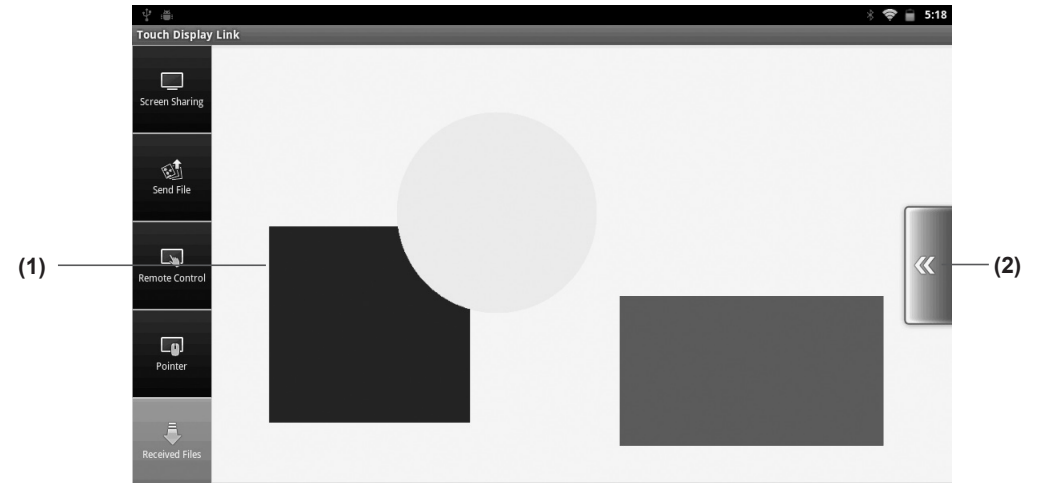
(1) Current folder display area

Displays the directory path of the file.

TIPS

- If the file extension is not recognized by the tablet device, the default icon () is displayed in the list.

2. Select file.



(1) Preview area

The area where a preview of the selected file is displayed.

Zoom in or out by pinching in or out.

If previews cannot be displayed, an icon image for each type of data is displayed.

Android devices can display previews of JPEG and PNG files.

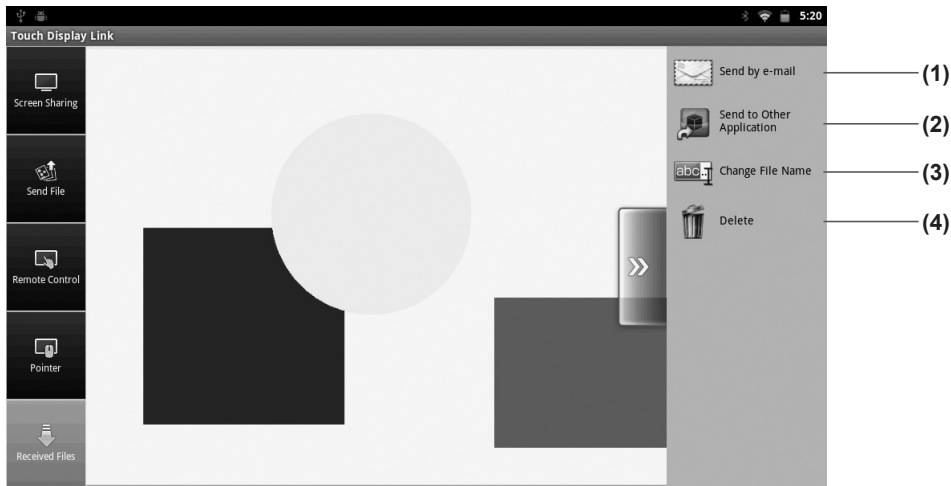
iOS devices can display previews of JPEG, PNG, TIFF, PDF, Excel (.xls/.xlsx), Word (.doc/.docx), and PowerPoint (.ppt/.pptx) files. (Layouts may not be displayed correctly.)

(2) Open/Close menu

Shows/hides the Preview screen menu. (page 20)

3. Tap [Open menu].

The file operation menu appears.



(1) Send by e-mail

Attaches the selected files to an e-mail. (See instructions on right.)

(2) Send to Other Application

Displays the selected files in the specified application. (page 21)

(3) Change File Name

Edits the name of the selected file. (page 21)

(4) Delete

Deletes selected files (page 21)

TIPS

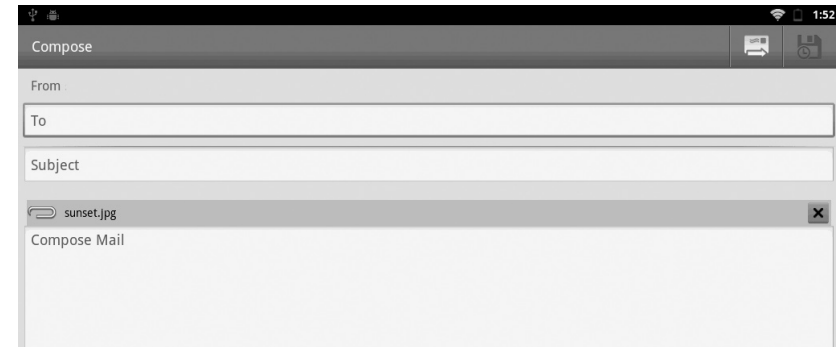
- The above actions can also be made by long-pressing a file name from the list and displaying a popup menu. (Android devices only)

■ Sending files by e-mail

You can send a selected file as an e-mail attachment.

The e-mail application installed on the tablet device is started up.

1. From the file operation screen, tap [Open menu] and then tap [Send by e-mail].



2. Enter the necessary details and send the e-mail.

For details on sending e-mail, refer to the tablet device manual.

TIPS

- If several applications are installed, a message prompting you to select an application may appear.

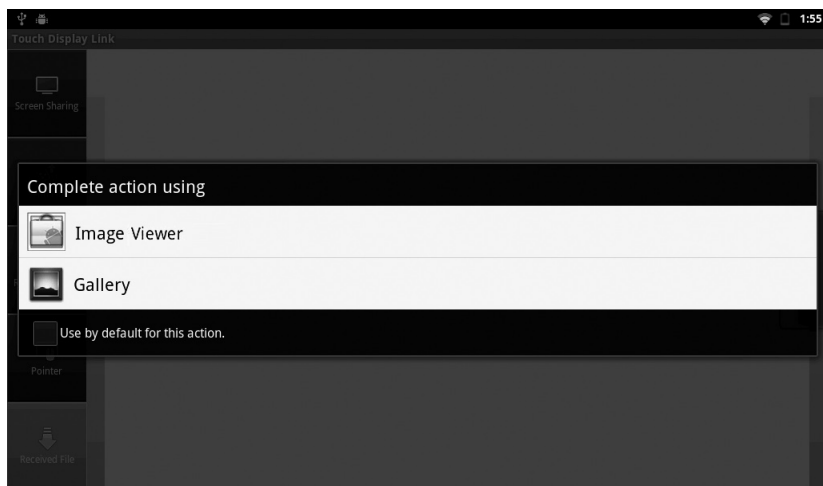
■ Sending files to an application

You can open the selected file in an application.

1. From the file operation screen, tap [Open menu] and then tap [Send to Other Application].

If the file can be opened in multiple applications, a message saying prompting you to select an application may appear.

Select an application.



TIPS

- The applications displayed will differ depending on the applications installed on the tablet device.

■ Editing file names

You can edit the name of the selected file.

1. From the file operation screen, tap [Open menu] and then [Change File Name].



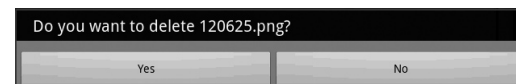
2. Edit the name of the file in the file name entry field.

3. Tap [Yes].

■ Deleting files

You can delete the selected files.

1. From the file operation screen, tap [Open menu] and then [Delete].

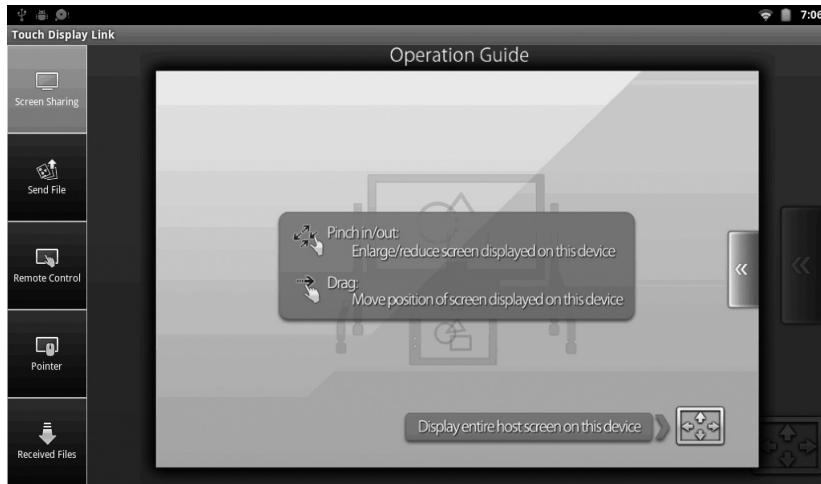


2. Tap [Yes].

Viewing Operation Guide

You can display operation guides.

1. Tap [Open menu].
2. Tap [Operation Guide].



To hide the operation guide, tap the screen.

Configuring host settings

You can configure a variety of settings including those for the host name, communications, security, and action when a file is received.

TIPS

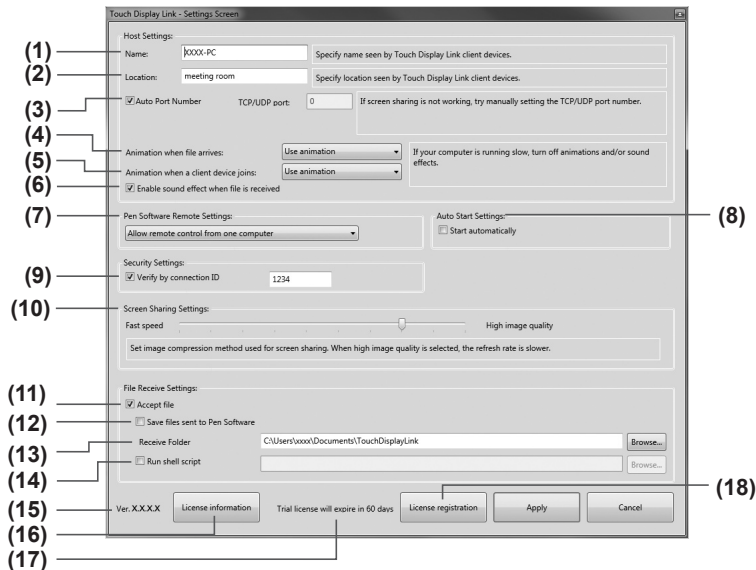
- Before adjusting these settings, consult the network administrator.

1. Tap the [Show host menu tag] on the desktop.

The Host menu appears.

2. Tap [Settings].

The settings screen appears.



The following settings can be configured from the settings screen:

(1) Name

Sets the name of the host. (Up to 50 half-/full-width characters)
This name is displayed on the tablet device when logging in.

(2) Location

Sets the location of the host. (Up to 50 half-/full-width characters)
Content entered here is displayed on the tablet device login screen.

(3) Auto Port Number

TCP/UDP port:

Sets port number used for communication.

You should normally select the “Auto Port Number” check box. This automatically sets the port number.

To set an arbitrary port number, clear the “Auto Port Number” check box, and enter a port number (from 0 to 65535) in the “TCP/UDP port” box.

(4) Animation when file arrives

Selects whether to use animation when a file is received.

(5) Animation when a client device joins

Selects whether to use animation when a user joins a meeting.

If the computer is slow, select “Do not use animation”.

(6) Enable sound effect when file is received

Select this option if you want a sound effect to be played when a file is received.

(7) Pen Software Remote Settings

Allow remote control from multiple computers

Multiple tablet devices can be used for remote operation at the same time.

Allow remote control from one computer

Only the tablet device that has obtained operation permission can be used for remote operation.

Do not allow remote control

Remote operation from a tablet device is disabled.

(8) Start automatically

Select this check box to start Touch Display Link when the computer starts up.

(9) Verify by connection ID

Limits tablet devices that can connect.

To verify tablet devices by conference connection ID, select the “Verify by connection ID” check box, and set the conference connection ID. (Up to 8 half-width alphanumeric characters)

(10) Screen Sharing Settings

Adjusts whether to give priority to speed (low image quality) or image quality (slow speed) when screen sharing.

Drag the slider in either direction to adjust.

(11) Accept file

Clear this check box if you want to prevent tablet devices from sending files to the host.

(12) Save files sent to Pen Software

Select this check box to save files sent from a tablet device to the host using “Paste on Current Sheet” or “Send to Pen Software”.

If this check box is selected, files are saved in the folder specified in “Receive Folder”.

(13) Receive Folder

Specifies the host folder in which to save received files when sending a file using “Send to Folder”.

(14) Run shell script

Sets whether to run a shell script on received files.

To run a shell script, select the “Run shell script” check box, and select a script.

The number of characters in the file path and file name may differ depending on the type of computer used.

For details, refer to the computer manual.

(15) Version

Shows the software version.

(16) License information

Shows software license information.

(17) Remaining number of days in trial period


Shows the number of days of the trial period remaining if the software is registered with a trial license.

(18) License registration

To officially register software that has already been registered with a trial license, enter a license code.

3. Tap [Apply].

TIPS

- To cancel settings and close the settings screen, tap [Cancel] or .

Exiting the application

Computer

1. Tap the [Show host menu tag] on the desktop.
The Host menu appears.
2. Tap [Exit].

Android device

1. Press the [Back] key twice.

iOS device

1. Press the [Home] key.
2. Press the [Home] key on the Home screen twice.
A list of currently running applications appears at the bottom of the screen.
3. Long-press “TDLink”.
The icon vibrates.
4. Tap [-] at the top left.

Uninstalling the software

Computer

TIPS

Ensure you are logged in with administrator privileges.

1. **Exit all application software.**
2. **From the “Start” menu, select “Control Panel”.**
3. **Tap “Uninstall a program”.**
In icon display mode (classic view), double-tap “Programs and Features”.
4. **Select [Touch Display Link] and then tap [Uninstall].**
5. **Follow the instructions on the screen.**
If a User Account Control window appears, tap [Continue].

This completes the uninstallation process.

Android device

1. **Press the [Menu] key, and then tap [Settings], [Applications], and [Manage applications].**
2. **In the list of applications, tap [Touch Display Link].**
3. **Tap [Uninstall].**

iOS device

1. **Long-press [TDLink].**
The icon vibrates.
2. **Tap the black [x] at the top left.**
A confirmation dialog appears.
3. **Tap [Delete].**

Trademarks

- Microsoft, Windows, Windows Vista, Excel, and PowerPoint are either registered trademarks or trademarks of Microsoft Corporation in the United States and/or other countries.
- Apple and App Store are trademarks of Apple Inc., registered in the U.S. and other countries.
iPad is a trademark of Apple Inc.
- Google, Android, and Google Play are trademarks or registered trademarks of Google Inc.
- The trademark, Android, is used under license from Google Inc.
- Adobe, Acrobat, and Reader are either registered trademarks or trademarks of Adobe Systems Incorporated in the United States and/or other countries.
- microSD and microSDHC are trademarks of the SD Association.
- The trademark, iOS, is used under license from Cisco Systems, Inc., in the U.S. and other countries.
- Wi-Fi is a trademark or registered trademark of the Wi-Fi Alliance.
- Intel, Celeron, and Intel Core 2 Duo are trademarks or registered trademarks of Intel Corporation or its subsidiaries in the U.S.A. and other countries.
- AMD, AMD Sempron, AMD Athlon, and combinations thereof are trademarks of Advanced Micro Devices, Inc.
- ASUS is a trademark of ASUSTeK Computer Inc.
- Samsung and Galaxy Tab are registered trademarks of Samsung Electronics Co., Ltd.
- MOTOROLA and XOOM™ are trademarks or registered trademarks of Motorola Trademark Holdings, LLC.
- This software uses the ImageKit7 technology.
ImageKit7 Copyright © 2005 Newton Corp.
- All other brand and product names are trademarks or registered trademarks of their respective holders.

OpenCV License Agreement

License Agreement
For Open Source Computer Vision Library

Copyright (C) 2000-2008, Intel Corporation, all rights reserved.
Copyright (C) 2008-2010, Willow Garage Inc., all rights reserved.
Third party copyrights are property of their respective owners.

Redistribution and use in source and binary forms, with or without modification, are permitted provided that the following conditions are met:

* Redistribution's of source code must retain the above copyright notice, this list of conditions and the following disclaimer.

* Redistribution's in binary form must reproduce the above copyright notice, this list of

conditions and the following disclaimer in the documentation and/or other materials provided with the distribution.

* The name of the copyright holders may not be used to endorse or promote products derived from this software without specific prior written permission.

This software is provided by the copyright holders and contributors "as is" and any express or implied warranties, including, but not limited to, the implied warranties of merchantability and fitness for a particular purpose are disclaimed.

In no event shall the Intel Corporation or contributors be liable for any direct, indirect, incidental, special, exemplary, or consequential damages (including, but not limited to, procurement of substitute goods or services; loss of use, data, or profits; or business interruption) however caused and on any theory of liability, whether in contract, strict liability, or tort (including negligence or otherwise) arising in any way out of the use of this software, even if advised of the possibility of such damage.

libtiff

Copyright (c) 1988-1997 Sam Leffler
Copyright (c) 1991-1997 Silicon Graphics, Inc.

Permission to use, copy, modify, distribute, and sell this software and its documentation for any purpose is hereby granted without fee, provided that (i) the above copyright notices and this permission notice appear in all copies of the software and related documentation, and (ii) the names of Sam Leffler and Silicon Graphics may not be used in any advertising or publicity relating to the software without the specific, prior written permission of Sam Leffler and Silicon Graphics.

THE SOFTWARE IS PROVIDED "AS-IS" AND WITHOUT WARRANTY OF ANY KIND, EXPRESS, IMPLIED OR OTHERWISE, INCLUDING WITHOUT LIMITATION, ANY WARRANTY OF MERCHANTABILITY OR FITNESS FOR A PARTICULAR PURPOSE.

IN NO EVENT SHALL SAM LEFFLER OR SILICON GRAPHICS BE LIABLE FOR ANY SPECIAL, INCIDENTAL, INDIRECT OR CONSEQUENTIAL DAMAGES OF ANY KIND, OR ANY DAMAGES WHATSOEVER RESULTING FROM LOSS OF USE, DATA OR PROFITS, WHETHER OR NOT ADVISED OF THE POSSIBILITY OF DAMAGE, AND ON ANY THEORY OF LIABILITY, ARISING OUT OF OR IN CONNECTION WITH THE USE OR PERFORMANCE OF THIS SOFTWARE.

libjpeg

This software is based in part on the work of the Independent JPEG Group.

SHARP[®]
SHARP CORPORATION